



HEALTH & SAFETY ALERT

Stud-wall Stairwell Protection

WHAT HAPPENED

A recent site inspection undertaken by the HSE has revealed the requirement to provide a 470mm mid rail centre within the stud wall in order to prevent falls through stairwells.

In the event that proprietary stairwell protection is removed, a 470mm noggin must now be installed around the stairwell location.

ACTION TO TAKE

WHO NEEDS TO TAKE ACTION: Contracts Managers, SMs/ ASMs, Site Agents, Site Teams, joinery installation teams or pre-boarders or authorised stud wall erectors?

WHAT TO DO

- The technical department has issued detailed advice and guidance. Ensure a toolbox talk is undertaken to carpenters in relation to this.
- Review current plots to ensure a line of timber noggins @ 470mm centres is installed (fig 2).
- Approach manufacturers to fit noggins at source.

RISK OF FALL FROM HEIGHT.

- All work must be planned.
- Noggins must not be removed by boarders as shown in fig 1. The use of letterbox style hatches can be utilised for plots with kite winder style staircases to alleviate manual handling constraints.

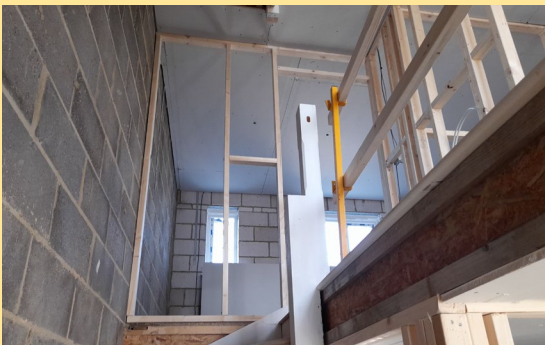


FIG 1

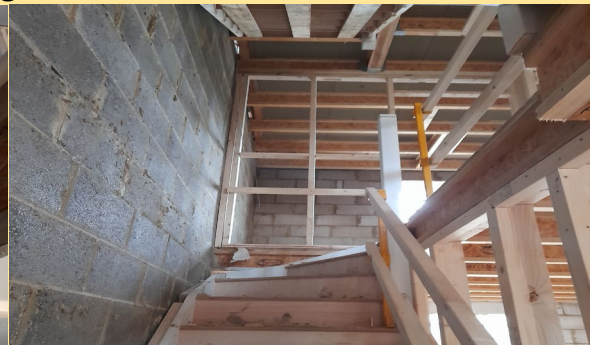


FIG 2