



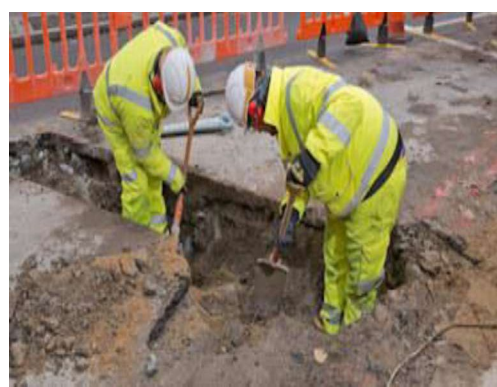
## Preventing Service Strikes Guidance

### Buried Services & Breaking Ground

#### Minimum Standards

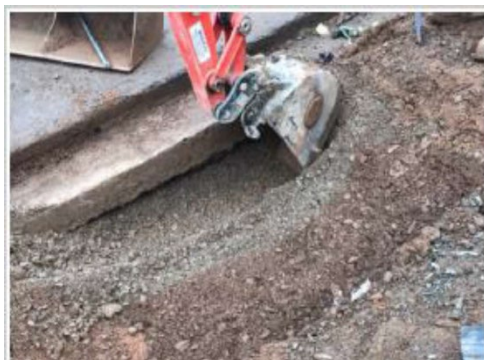
- Only competent and trained operatives to carry out works. SMSTS, CAT & Genny, First Aid at Work,
- CAT g4+ or equivalent to be used as a minimum on all sites.
- All services identified MUST BE MARKED on the ground with spray paint.
- Only insulated tools to be used for hand digging.
- Requirements to be checked by Supervisor before works commence.
- Service drawings and GPR Surveys to be referenced and areas to be excavated highlighted before works commence (copies attached to Permit to Dig) (HSMS form [041](#))
- Permit to Dig must be completed before works commence.
- Area scanned for depth and line and services marker spayed on the ground.
- No mechanical digging once the top layer of tarmac has been removed as most services will now be within 500mm.

#### What Good Looks Like



#### Prohibited items & Practices

- No mechanical digging within 500mm of a known live service.



#### Tools & Equipment



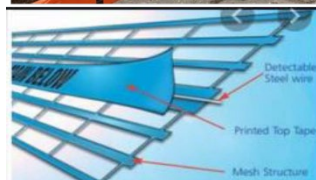
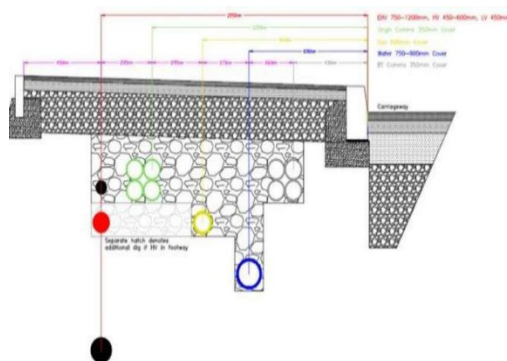
Authorised by: HS&E Director	Version date: 05.10.22	Version: 1	STD: Preventing Service Strikes Guidance: Preventing Service Strikes
Uncontrolled if printed or copied – always check the Group HS&E policy folder for latest version			

## Protecting & Exposing Service Connections

## Minimum Standards

- All services to be laid in accordance with National Joint Utilities Group guidance.
- Bulk bags partly filled with sand to be laid in excavations where service connections will be required.
- Stone to be laid and compacted to underside of base course.
- Before tarmac is laid timber bearer to be placed across the path either side of the proposed service excavation to mitigate mechanical digging
- When required tarmac and stone are removed with excavator Bulk bag of sand is now removed exposing services.
- Hand dig remaining aggregates from around the services.
- Road plates, Chapter 8 barriers and signage must be used where required.
- Detectable warning tape to
- be placed 300mm on a sand bed above any service

## What Good Looks Like



## Prohibited items & Practices

- No steel shovels or mechanical digging within 500mm of live services



## Tools & Equipment



<b>Authorised by:</b> HS&E Director	<b>Version date:</b> 05.10.22	<b>Version:</b> 1	<b>STD:</b> Preventing Service Strikes <b>Guidance:</b> Preventing Service Strikes
<b>Uncontrolled if printed or copied – always check the Group HS&amp;E policy folder for latest version</b>			





## New Service Installation

### Minimum Standards

- Bulk bags of sand to be placed where known service connections and road crossings will be required.
- Backfill to be sand and MOT type 1 Only
- Detectable warning tape to be laid on sand 300mm above the service.
- Flexible vertical sleeves (duct) placed to protect any purge valves (nipples). Loaded with bulk bag of sand and detectable marker tape.
- Preparing for future gas and
- water connections with timber bearers and sprayed brick over vertical sleeve
- Tarmac base course can be removed without mechanical cutting.
- Base course and top layer of type 1 can be removed mechanically until bulk bag lifting straps are located.
- All open excavation MUST be protected with Chapter 8 barriers, signs and road plates where required in line with NRSWA.

### What Good Looks Like



### Prohibited items & Practices

- No mechanical cutting and ONLY the correct backfill to be used



### Tools & Equipment



Authorised by: HS&E Director	Version date: 05.10.22	Version: 1	STD: Preventing Service Strikes Guidance: Preventing Service Strikes
Uncontrolled if printed or copied – always check the Group HS&E policy folder for latest version			



## Use of Vacuum Extraction

### Minimum Standards

- Vac Ex will be used when HV cables, High Pressure gas, large water services or where multiple services have been identified.
- Where risk assessments identify difficulties in excavating safely a Vac Ex must be used.
- All operators must be suitably trained to operate a Vac Ex (CPCS category , A78 (A-H) Vacuum Excavation)

### What Good Looks Like



### Prohibited items & Practices

- Only use for designed purpose

### PPE



Authorised by: HS&E Director	Version date: 05.10.22	Version: 1	STD: Preventing Service Strikes Guidance: Preventing Service Strikes
Uncontrolled if printed or copied – always check the Group HS&E policy folder for latest version			